

## Pinta-asennuspistorasiat TwinCONTACT

### Osanro 32

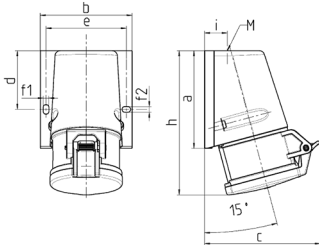


- ruuvittomat jousiliittimet
- ulkoinen kiinnitys

### Tekniset tiedot

|                        |                        |
|------------------------|------------------------|
| Virta                  | 32 A                   |
| Napaluku               | 5 p                    |
| Volt                   | 400 V                  |
| Kelloasento            | 6 h                    |
| Hertz                  | 50-60 Hz               |
| Liitinteknologia       | Ruuviton - TwinCONTACT |
| Kosketin               | vakio                  |
| Suojaustyyppi          | IP44                   |
| Paino                  | 350 g                  |
| Yhdenmukaisuusvakuutus | VDE, EAC, CQC          |

### Mitat



| Drawing<br>1 MB 463 | Amp.<br>Poles   | 16   |       |       | 32    |       |       |
|---------------------|---|------|-------|-------|-------|-------|-------|
|                     |   | 3    | 4     | 5     | 3     | 4     | 5     |
| Dim. in mm          | a   | 95   | 93    | 92.5  | 102   | 102   | 102   |
|                     | b   | 73.5 | 87.5  | 87.5  | 94    | 94    | 94    |
|                     | c   | 93   | 107.5 | 110   | 115.5 | 115.5 | 119.5 |
|                     | d   | 55.5 | 55.5  | 55.5  | 62    | 62    | 62    |
|                     | e   | 61   | 76    | 76    | 84    | 84    | 84    |
|                     | f1  | 5.3  | 5.3   | 5.3   | 5.1   | 5.1   | 5.1   |
|                     | f2  | 5.3  | 5.3   | 5.3   | 5.1   | 5.1   | 5.1   |
|                     | h   | 139  | 139   | 136.5 | 160   | 160   | 156.5 |
|                     | i   | 19.8 | 21.5  | 21.5  | 26.5  | 26.5  | 26.5  |
|                     | M   | M20x | M25x  | M25x  | M25x  | M32x  | M32x  |
|                     | Terminal for cond. cross section (mm <sup>2</sup> ) min.-max. | 1.5  | 1.5   | 1.5   | 1.5   | 1.5   | 1.5   |
|                     |   | 1.5  | 1.5   | 1.5   | 2.5   | 2.5   | 2.5   |
|                     |   | -4   | -4    | -4    | -6    | -6    | -6    |